

Grades 4–5

Tier B/C



# ACCESS for ELLs®

## Sample Writing Tasks: Pacific Islander Life

### Using this document

Review this sample item to gain a better understanding of the look, feel, and process of the ACCESS for ELLs Writing test. Use this item in any way that is helpful for you and your students. If practical for your classroom, WIDA strongly encourages you to do a full mock administration of this sample item, as a realistic administration can help prepare your students for the real test.

If you do plan a mock administration, set aside 45 minutes to explain the activity and allow students to answer the questions. Create materials for the mock administration by printing:

- One copy of page 1 for yourself.
- One copy of pages 2–5 for each student. (Print single sided)

### Introducing the sample items

Explain to your students that they are about to complete a writing exercise. This exercise is similar to a test they will take in the future. The test will be their opportunity to demonstrate their English proficiency in writing, and this practice exercise will help them get ready for the test.

When the students are ready and understand what they are going to do, pass out the test materials. Each student needs a complete copy of the sample test items and a pencil.

Ask the students to write their name at the top of each page.

### Monitoring the test

Monitor the students. Check to make sure everyone is following directions. When the students have finished writing, encourage them to check their work using the questions on the last page.

If students are working productively at the end of 30 minutes and need more time, allow them no more than 5 additional minutes to complete their work and then say: ***Please finish what you are writing now.*** PAUSE.

End the testing session by saying:

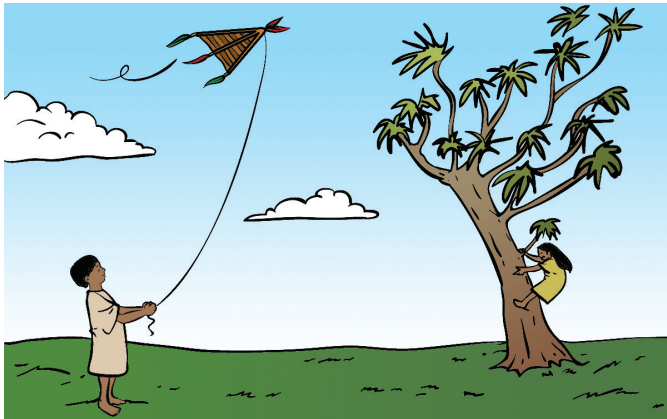
**Please put your pencil down, and I will collect your papers.**

## Part C: Pacific Islander Life

Tane and his sister Kura lived over 300 years ago in New Zealand, a group of islands in the South Pacific Ocean. Look at these pictures and read about Tane and Kura. Think about how your life is the same and different from Tane and Kura's life.

1

Tane and Kura had fun flying kites and climbing trees.



Tane and Kura played outdoors.

2

Kura and her family weaved plant leaves to make decorations, baskets, and clothing.



Kura made baskets.

3

Tane and Kura did not go to school. Their family taught them lessons, like how to garden and catch food.



Tane learned to grow food.

4

A *hangi* is an underground cooking pit covered with dirt. Tane and his family used a *hangi* to cook food.



Tane cooked outdoors.

Name: \_\_\_\_\_

## Plan your writing

On the next page, you will write how your life is the same and different from Tane and Kura's life. You can use your own ideas, or write about the things shown in the pictures.

Think carefully about these questions to get ideas for your writing.

- ☐ How is your life the same as Tane and Kura's?
- ☐ How is your life different from Tane and Kura's?
- ☐ How do you do things differently from Tane and Kura?

Use this space to organize your ideas about your life and Tane and Kura's life. You can make notes, an outline, a web, or any other kind of graphic organizer. Add details.

Write your essay on the next page 

Name: \_\_\_\_\_

**Now it's your turn to write!**

Describe your life and how it is the same and different from Tane and Kura's life. Use details from the pictures to support your ideas.


You can write on the next page, too. 

**Name:** \_\_\_\_\_

[illegible]

Now check your writing. Ask yourself:

- ☐ Did I write a beginning?
- ☐ Did I support my main points with details?
- ☐ Did I write an ending?
- ☐ Did I choose the best words for my writing?
- ☐ Did I organize my writing?
- ☐ Did I make my ideas clear?

